



# Shandong Shengrun Automobile Co., Ltd

Tongya road NO.1, Quanpu industrial area Liangshan County, Shandong Province, China  
Mobile: +86 15805376335 | Tel: +86-537-7608666 | jonah@shengrunauto.cn

## Quotation Sheet



Quotation No.: SR2111202JL02

Date: 2022.04.08

Item	Description of Vehicles	Quantity	Price Term	Unit Price	Total Amount
1.	3 Axles 60 tons Low bed Semi-Trailer	3 units	FOB Tianjin		
			<b>CIF</b>	<b>US\$</b>	<b>US\$</b>

Quotation valid date: 15 days.

### Terms & Conditions:

<b>Delivery time</b>	Production time 20 workdays after deposit payment received. 23 workdays ready to ship at China port.
<b>Package &amp; Shipment</b>	3 Units per package by Tractor truck, Shipment by Bulk Ship or Ro-ro Ship
<b>Warranty &amp; After-sale service</b>	12 Months warranty for main beam. We'll provide qualified spare parts with the price we get from our suppliers, and sent engineer for maintenance if necessary.
<b>Payment terms</b>	30% Deposit by T/T within 3 days after order confirmed. 70% Balance payment by T/T before delivery from factory.

**SHENGRUN AUTO**  
Double Safety Trailer





# Shandong Shengrun Automobile Co., Ltd

Tongya road NO.1, Quanpu industrial area Liangshan County, Shandong Province, China  
 Mobile: +86 15805376335 | Tel: +86-537-7608666 | jonah@shengrunauto.cn

## Specifications:

	<b>Type:</b>	Low bed Semitrailer - Narrow gooseneck type rear ramp ladder
	<b>Dimension:</b>	13000*2500*3050mm
	<b>Wheel base:</b>	8600+1310+1310mm
	<b>Payload:</b>	Approx. 60 tons
	<b>Tare weight:</b>	Approx. 11,000kg
	<b>G.V.W.R.:</b>	Approx. 71,000kg
<b>Frame</b>	Design/welding Technology	Heavy duty and extra durability designed; welding by automatic Submerged-Arc processes.
	Main beam	Q345B High strength steel. Height:520mm, Top Flange 18mm; Bottom Flange 20mm. Middle Flange 10mm;
	Side beam	Heavy duty 20# channel steel
	Crossbeam	Reinforced square tube steel
	Loading deck	Loading area length 9000mm, Height: 1100mm 5 mm thickness chequered plate
	Gooseneck	Narrow gooseneck with side ramp
	Ramp ladder	Mechanical Ramp ladder at Rear Width 800mm
<b>OEM Parts</b>	King Pin	3.5''(90#) Welding/ bolted type king pin
	Landing Gear	28 Tons manual operation with two speed
	Axle	3 axles * 13 tons, Long axle Shengrun brand
	Suspension	Heavy duty tri-axles suspension with equalizers, American design
	Leaf Spring	6 Sets 60# spring, 10 layers * 13mm thickness * 90mm width
	Brake system	4 double+2 single brake chambers; Wide brake pads, 2*45 Liters air tank; Reliable Relay valve .
	Rim	6.5-20*22.5 steel wheel rim, 12 Pcs +1 spare
	Tire	8.25R20 tire, 12 Pcs +1 spare
<b>Accessories</b>	Rear&Side Guard	Side guard+Rear guard+Mud guard+ Anti Static device
	Spare Tire Carrier	1 set spare wheel carriers, including a riser.
	Tools box	1 units Standard tool box
	Rope tightener	Standard connection point on side beam
	Reflector	As per customer's requirement
<b>Electrical</b>	One unit of 24V 7-Pin ISO 1185 socket; LED light ( Standard rear light, side light, rear reflector, side light, side reflector etc.)	
<b>Painting</b>	Sand blasting before painting; one coats of primer, anti-corrosion; two coats of finish painting; Polyurethane paint>100um. Color optional. Logo, stickers and reflector as per customer's requirement	

\* Notes:

1. The above dimension and weight will be adjusted according to the tractor specifications and actual production design.
2. All the details not mentioned above should comply with Chinese regulations.
3. If any components or structure changed, the price shall be modified accordingly.

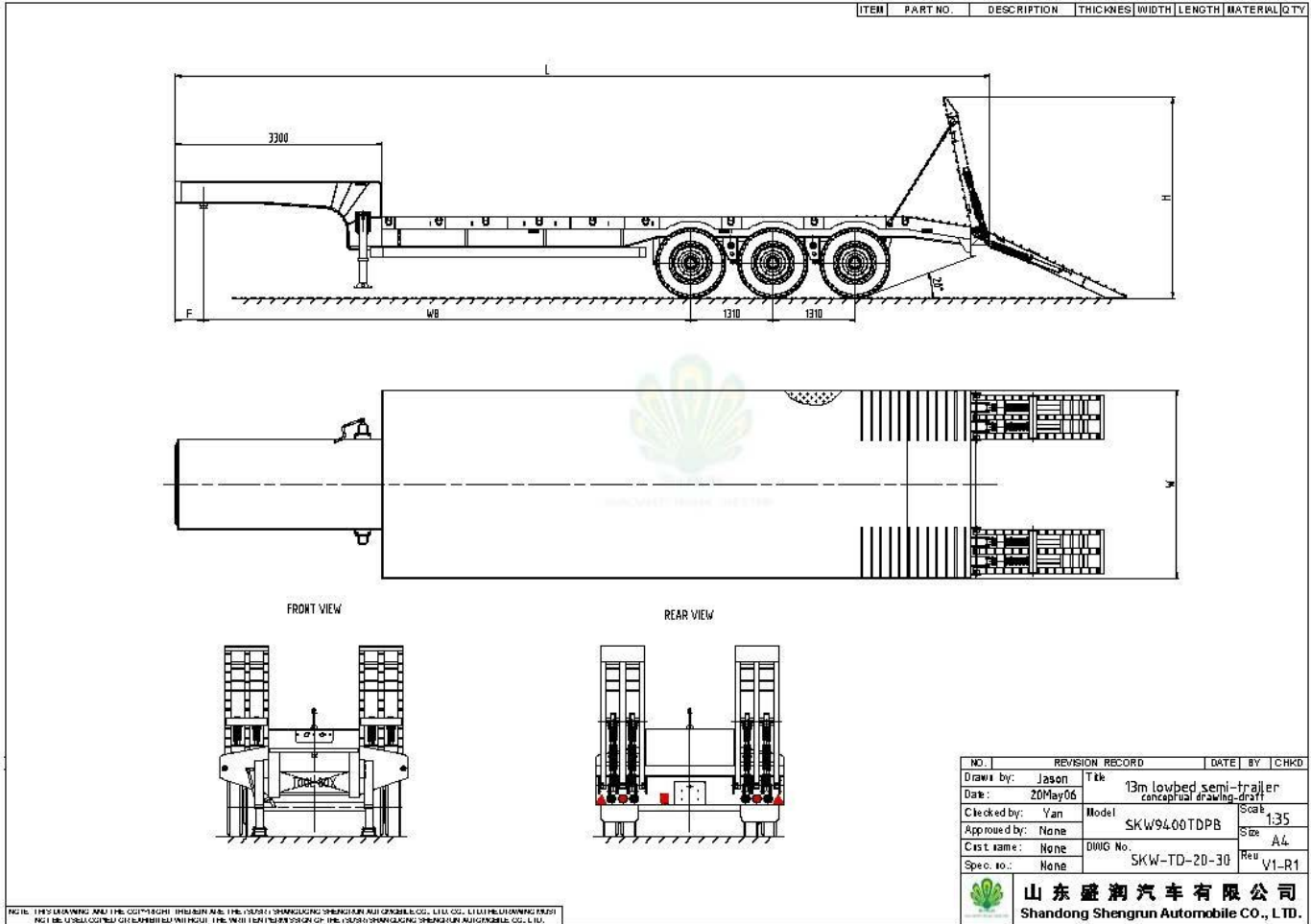




# Shandong Shengrun Automobile Co., Ltd

Tongya road NO.1, Quanpu industrial area Liangshan County, Shandong Province, China  
 Mobile: +86 15805376335 | Tel: +86-537-7608666 | jonah@shengrunauto.cn

## Drawing for Reference



SHENGRUN AUTO  
Double Safety Trailer

Anti-fracture

Anti-damage

Anti-leakage

Anti-vibration

Anti-rollover



# Shandong Shengrun Automobile Co., Ltd

Tongya road NO.1, Quanpu industrial area Liangshan County, Shandong Province, China  
Mobile: +86 15805376335 | Tel: +86-537-7608666 | jonah@shengrunauto.cn



**SHENGRUN AUTO**  
**Double Safety Trailer**





# Shandong Shengrun Automobile Co., Ltd

Tongya road NO.1, Quanpu industrial area Liangshan County, Shandong Province, China  
Mobile: +86 15805376335 | Tel: +86-537-7608666 | jonah@shengrunauto.cn

## Packing & Shipment



**SHENGRUN AUTO**  
**Double Safety Trailer**

