



Shandong Shengrun Automobile Co., Ltd

Tongya road NO.1, Quanpu industrial area Liangshan County, Shandong Province, China
Mobile: +86 15805376335 | Tel: +86-537-7608666 | jonah@shengrunauto.cn

Quotation Sheet



Quotation NO.: SR211130JL02

Date: 2021.11.30

Item No.	Description of Vehicles	Quantity	Price Term	Unit Price	Total Amount
1.	3 Axles 40ft Fence side Cargo Semi-Trailer	3 Units	FOB Tianjin	US\$	US\$
			CIF Lagos	US\$	US\$

Currency: 1 USD = 6.3 RMB Quotation valid date: 15 days

Terms & Conditions:

Delivery time	Production time 20 workdays after deposit payment received. 25 workdays ready to ship at China port.
Package & Shipment	3 Units per package by Tractor truck, Shipment by Bulk Ship or Ro-ro Ship
Warranty & After-sale service	12 Months warranty for main beam. We'll provide qualified spare parts with the price we get from our suppliers, and sent engineer for maintenance if necessary.
Payment terms	30% Deposit by T/T within 3 days after order confirmed. 70% Balance payment by T/T before delivery from factory.

SHENGRUN AUTO

Since 1982. Double safety Tanker





Shandong Shengrun Automobile Co., Ltd

Tongya road NO.1, Quanpu industrial area Liangshan County, Shandong Province, China
 Mobile: +86 15805376335 | Tel: +86-537-7608666 | jonah@shengrunauto.cn

Specifications:

	Type:	Fence side Cargo Semitrailer - Straight Beam Type
	Dimension:	12500*2500*3400mm
	Wheel base:	6700+1310+1310mm
	Payload:	Approx. 40 tons
	Tare weight:	Approx. 7,500kg
	G.V.W.R.:	Approx. 67,500kg
Frame	Design/welding Technology	Heavy duty and extra durability designed; welding by automatic Submerged-Arc processes.
	Main beam	Q345 High strength steel. Height:500mm, Top Flange 12mm; Bottom Flange 14mm. Middle Flange 8mm;
	Side beam	Heavy duty 14# channel steel
	Crossbeam	Reinforced square tube steel 80*40mm
	Loading deck	2.5 mm thickness chequered plate Height: 1550mm
	Rear Guard	Standard type Height 500mm
Cargo container	Dimensions	12500*2500*1800mm Side walls detachable for shipping
	Front Bezel	Detachable type height 1600mm
	Open doors	Drop side doors 12+1 Pcs , height: 800mm
	Side fence	12+1 Pcs Fence doors on 14 Pillars, height 650mm
OEM Parts	King Pin	3.5''(90#) Welding/ bolted type king pin
	Landing Gear	28 Tons manual operation with two speed
	Axle	3 axles * 13 tons, square axle Shengrun brand
	Suspension	Heavy duty tri-axles suspension with equalizers
	Leaf Spring	6 Sets 60# spring, 10 layers * 13mm thickness * 90mm width
	Brake system	6 double brake chambers; Wide brake pads, 2*45 Liters air tank; Reliable Automatic transformer Relay valve for ABS
	Rim	9.0*22.5 steel wheel rim, 12 Pcs
Accessories	Tire	12.00R22.5 tire, 12 Pcs
	Rear&Side Guard	Side guard+Rear guard+Mud guard+ Anti Static device
	Spare Tire Carrier	1 set spare wheel carriers, including a riser.
	Tools box	1 units Standard tool box
	Rope tightener	Standard connection point on side beam
Reflector	As per customer's requirement	
Electrical	One unit of 24V 7-Pin ISO 1185 socket; LED light (Standard rear light, side light, rear reflector, side light, side reflector etc.)	
Painting	Sand blasting before painting; one coats of primer, anti-corrosion; two coats of finish painting; Polyurethane paint>80um . Color optional.	





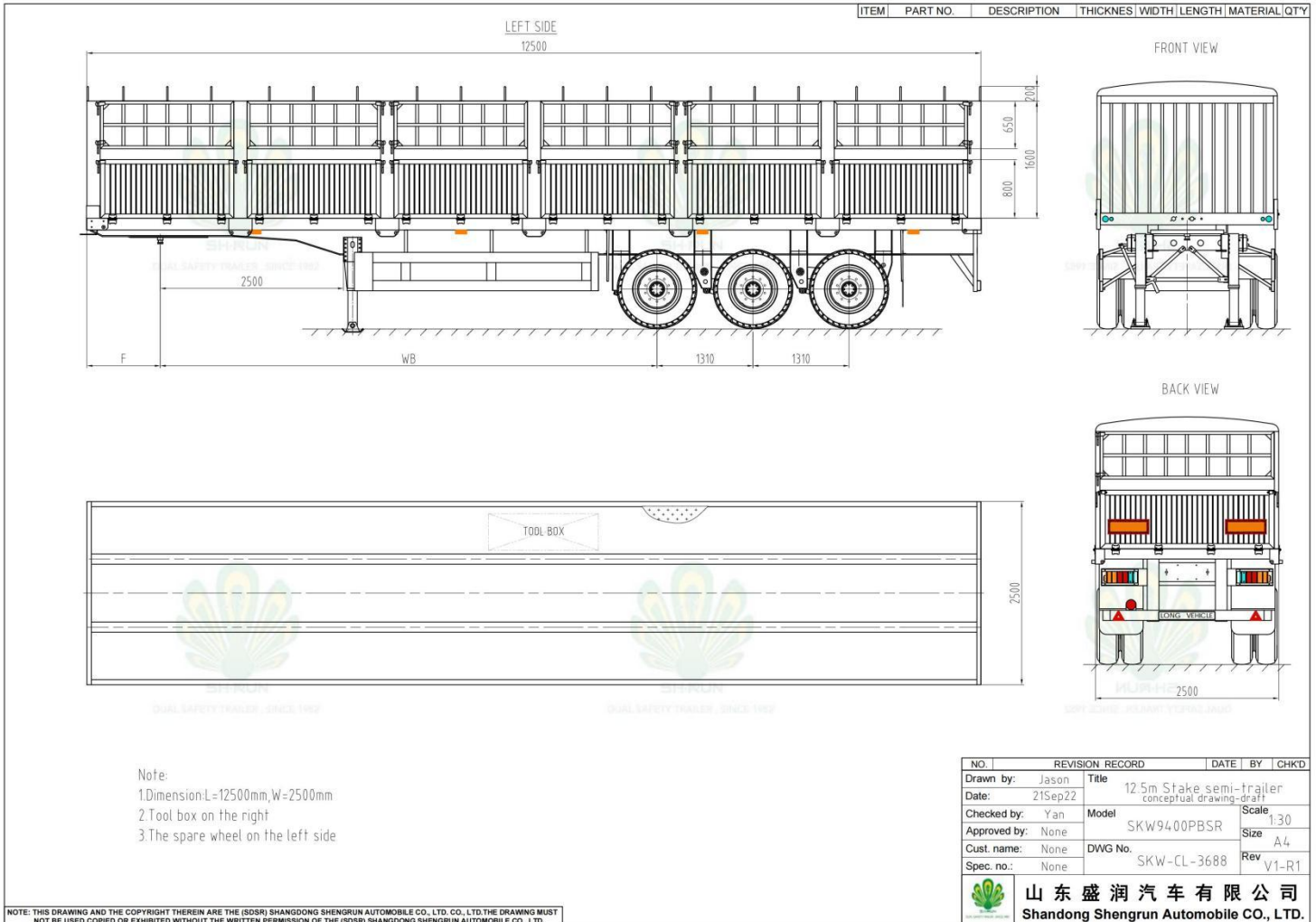
Shandong Shengrun Automobile Co., Ltd

Tongya road NO.1, Quanpu industrial area Liangshan County, Shandong Province, China
 Mobile: +86 15805376335 | Tel: +86-537-7608666 | jonah@shengrunauto.cn

*** Notes:**

1. The above dimension and weight will be adjusted according to the tractor specifications and actual production design.
2. All the details not mentioned above should comply with Chinese regulations.
3. If any components or structure changed, the price shall be modified accordingly.

Drawing for Reference





Shandong Shengrun Automobile Co., Ltd

Tongya road NO.1, Quanpu industrial area Liangshan County, Shandong Province, China
Mobile: +86 15805376335 | Tel: +86-537-7608666 | jonah@shengrunauto.cn

Details and Accessories



SHENGRUN AUTO
Since 1982. Double safety Tanker





Shandong Shengrun Automobile Co., Ltd

Tongya road NO.1, Quanpu industrial area Liangshan County, Shandong Province, China
Mobile: +86 15805376335 | Tel: +86-537-7608666 | jonah@shengrunauto.cn

Details and Accessories



SHENGRUN AUTO

Since 1982. Double safety Tanker





Shandong Shengrun Automobile Co., Ltd

Tongya road NO.1, Quanpu industrial area Liangshan County, Shandong Province, China
Mobile: +86 15805376335 | Tel: +86-537-7608666 | jonah@shengrunauto.cn

Packing and Shipment



SHENGRUN AUTO

Since 1982. Double safety Tanker

