



QUOTATION SHEET



Quotation NO.: SR220310JL03

Date: 2022.03.10

Item	Description of Vehicles	Quantity	Price Term	Unit Price	Total Amount
1.	45,000 Liters 3 Compartment Carbon Steel Fuel Tank Semitrailer	10 Units	FOB Tianjin	US\$	US\$
			CIF	US\$	US\$

Present currency: 1 USD = 6.3 RMB

Quotation valid date: 15 days

Terms & Conditions:

Delivery time	Production time 30 days after deposit payment received. 32 days ready to ship at China port.
Package & Shipment	1 Unit per package by Tractor truck, Shipment by Bulk Ship or Ro-ro Ship
Warranty & After-sale service	12 Months warranty for main beam. We'll provide qualified spare parts with the price we get from our suppliers, and sent engineer for maintenance if necessary.
Payment terms	30% Deposit by T/T within 3 days after order confirmed. 70% Balance payment by T/T before delivery from factory.





Specifications:

Type		Fuel tank semi trailer, 3 compartments 3 Equal volume compartments (15000L+15000L+15000L)
Usage		Hauling fuel oil(Gasoline, Diesel oil, Lube oil, etc.)
Weight	Tare Weight	Approx. 9.5 Tons
	Loading capacity	Effective volume 45,000 Liters, +3% vapor space
Dimensions	Outside Dimension	11860*2500*3650 mm (Final dimension depend on the final design drawings) Tank body: 11450*2500*1960 mm
Tank Body	Design/welding Technology	Heavy duty and extra durability designed; Main beam welding by automatic Submerged-Arc processes. Standard features of a full length "T" shape sub frame welded to tank bottom.
	Tank body	Material Q235 steel, End plate thickness 6mm, Tank shell thickness 5mm, Anti-wave plate thickness 5mm
	Discharge valve	3 sets 4" API valve for bottom & top loading, with 4" to 3" adaptor, Jialong brand. The API adaptor to be seal with mechanical sealing system.
	Emergency valve	4 inch Aluminum alloy Pneumatic Emergency shut-off , 3 Pcs
	Breathing valve	Stabilizing breathing valve, 6 Pcs Aluminum alloy
	Roll-over coaming	Roll-over coaming: Full length roll-over coaming for anti-fall protection on both side of tank top
	Manhole	Euro Standard, Aluminum alloy, 3 Pcs, Diameter: 500mm
	Cat walk	Unti-slip with Foldable handrail
	Test	Hydrostatic test to 5 psi(35Kpa) on each compartment
OEM parts	King Pin	Kingpin / plate: 12mm thick mild steel plate, 3.5"(90#) bolts type king pin
	Landing Gear	28 Tons manual operation with two speed
	Axle	3 axles * 13 tons, square axle Shengrun brand
	Suspension	Heavy duty tri-axle suspension with equalizers, American design
	Leaf Spring	6 Sets 60# spring, 10 layers * 13mm thickness * 90mm width
	Brake system	Dual line air brake system comprising of contact type coup ling, brake chamber, emergency valve and air reservoir
	ABS	Nil
	Rim	9.0*22.5 steel wheel rim, 12 Pcs + 1 spare
	Tire	12.00R22.5 Tubeless tire, 12 Pcs + 1 spare
Accessories	Fire extinguisher	2 Pcs *8 kgs fire extinguisher with box
	Ladder	Detachable ladder equipped at rear





Shandong Shengrun Automobile Co., Ltd

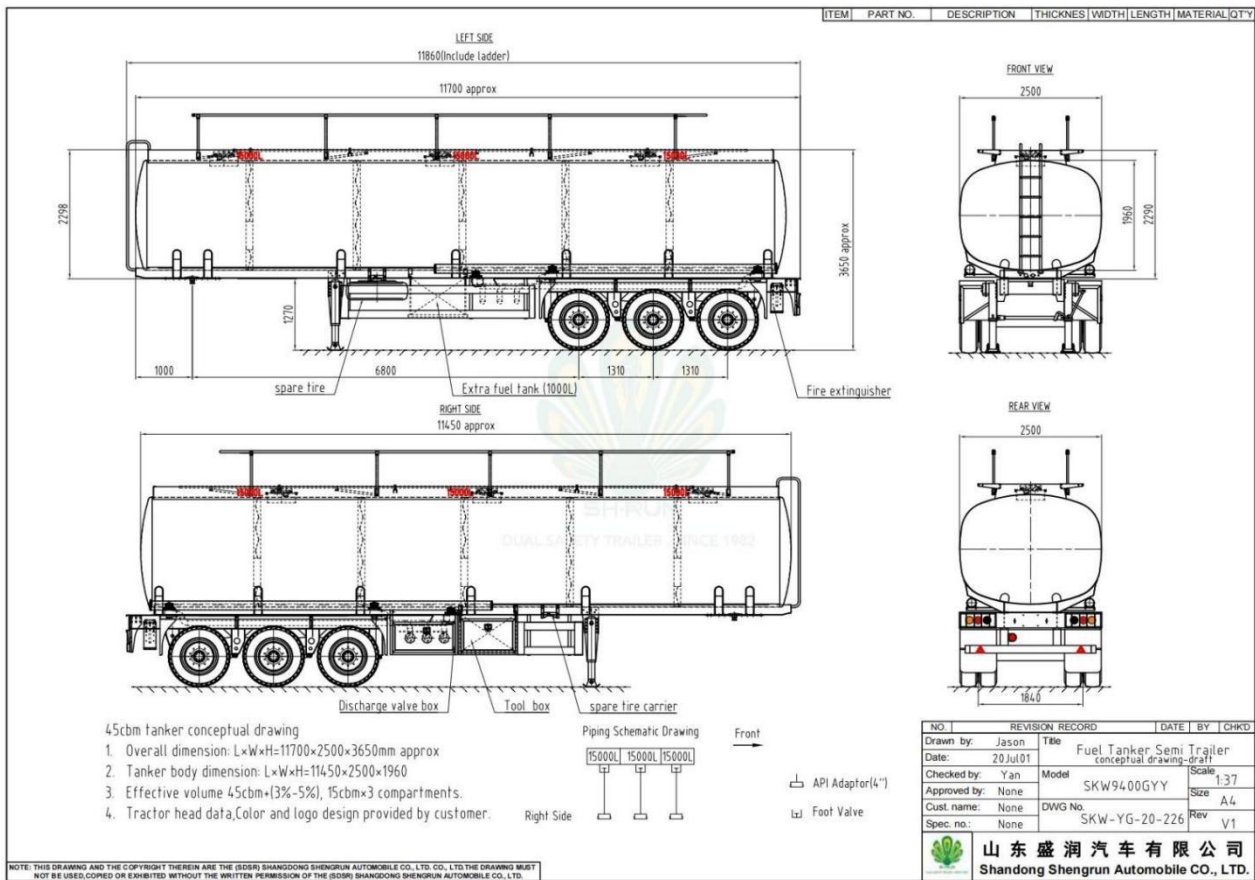
Tongya road NO.1, Quanpu industrial area Liangshan County, Shandong Province, China

	Discharging Hose	3 inch Rubber hose with hose carriers, 2Pcs, 6 meters /each
	Hose container	2 Pcs Standard PVC Cylinder Rubber hose container
	Rear&Side Guard	Side guard+Rear guard+Mud guard+ Anti Static device
	Spare Tire Carrier	2 sets spare wheel carriers, including a riser.
	Extra Fuel Carrier	600 Liters extra fuel tank attached under tank position
	Valve Box	One Pc steel Valve box with lock.
	Tools Box	One piece steel tool box with lock.
Electrical	One unit of 24V 7-Pin ISO 1185 socket; LED light (Standard rear light, side light, rear reflector, side light, side reflector etc.)	
Painting	Sand blasting before painting; one coats of primer, anti-corrosion; two coats of finish painting; Powder spray Polyurethane paint . Color optional.	

* Notes:

1. The above dimension and weight will be adjusted according to the tractor specifications and actual production design.
2. All the details not mentioned above should comply with Chinese regulations.
3. If any components or structure changed, the price shall be modified accordingly.

Drawings for Reference





Pictures and Details for Reference



Gooseneck type frame – Low gravity center



Straight Frame type – Stronger Structure of tank body & Chassis



Aluminum alloy / Stainless steel valve



Euro Standard API Valve – Bottom loading and discharging





产品优势 Product advantages:

1. 该车型为批量出口尼日利亚的成熟车型，在 2021 年出口 100 多台，已被客户高度认可，使用一年多来未收到任何售后故障情况的反馈。This is a mature model exported to Nigeria in batches. More than 100 units were exported in 2021. It has been highly recognized by customers and has not received any feedback of complain and after-sales failures after more than a year of use.



2. 该车采用直梁式结构，车架和罐体强度更高，罐体与车架设计为分体式装配，可拆分用集装箱运输或散货运输，由于坦桑尼亚当地进口关税较高，采用散件运输方式可大大降低进口关税费用； The tanker adopts a straight beam structure, the frame and tank body are stronger, and the tank body and the frame are designed for split assembly, which can be split and transported in containers or in bulk. The transportation method can greatly reduce the import tariff cost;



3. 该车主梁国内配置为：腹板厚度 5mm，下翼板厚度 8mm，该车出口配置为腹板 6mm，下翼板 12mm，可适用于国外复杂路况运输； The main frame for export configuration: Middle flange plate 6mm, Bottom flange plate 12mm, (Stronger than China domestic model: Middle flange plate thickness of 5mm, bottom flange 8mm), which is more suitable for transportation in foreign complex road conditions;





4. 牵引板厚度为 12mm，强度更高，有效防止差路况引起牵引板开裂，牵引销采用 JOST 品牌装配式； The thickness of the Kingpin plate is 12mm, and the strength is higher, which can effectively prevent the cracking of the traction plate caused by poor road conditions, and the Kingpin adopts the JOST brand assembly type;



5. 该车型阀门和罐盖采用欧洲标准，质量和性能更高； The Discharging valve and Manhole adopts European standards with higher quality and performance;





6. 支腿使用 JOST 品牌， 继动阀使用 WABCO 品牌， 均为国际知名品牌； JOST brand landing gear, and the relay valve uses the WABCO brand, both are internationally famous brands;



7. 罐体边支梁采用扣盒式， 大大增加了罐体强度， 有效防止罐体开裂； The side support arm of the tank body adopts the buckle box type, which greatly increases the strength of the tank body and effectively prevents the tank body from cracking;



8. 罐体顶部加装护肩和罐盖防护装置， 能有效防止在极端情况下发生侧翻时出现泄漏而引发危险， 灌顶加装折叠式护栏， 保障灌顶操作人员安全； The top of the tank is equipped with shoulder guards and tank cover protection devices, which can effectively prevent danger of leakage when it rolls over in extreme cases, A folding guardrail is installed on the top to ensure the safety of the top operators;



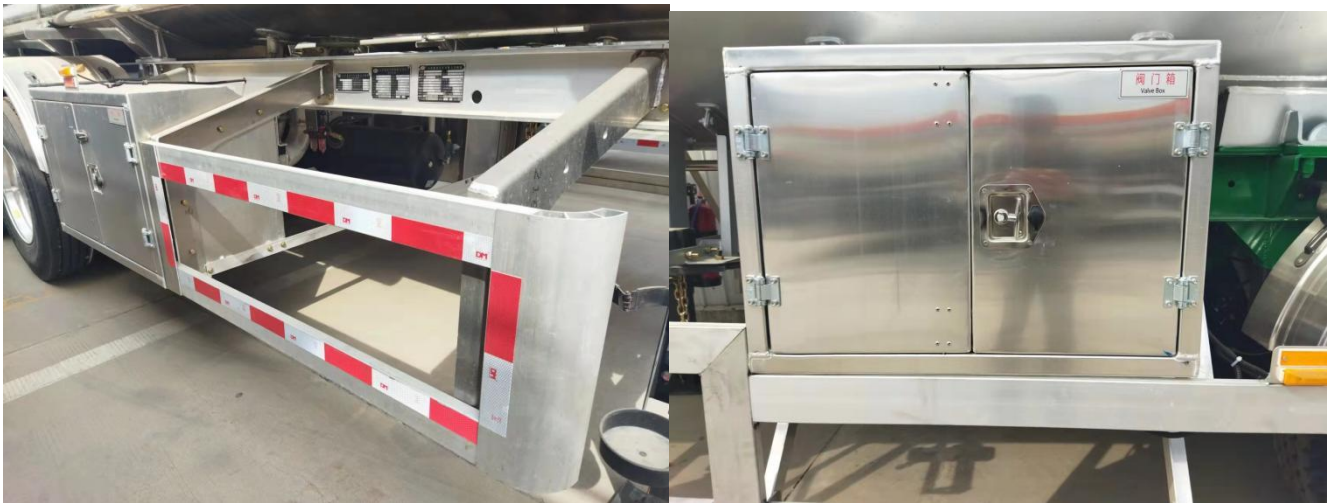


9. 油漆采用喷粉工艺, 漆膜厚, 亮度高, 使用寿命长, 可有效防止海运过程中的海水腐蚀; The paint adopts powder spraying process, with thick paint film, good out looking and long service life, which can effectively prevent seawater corrosion during shipping;



10. 爬梯, 工具箱, 阀门箱, 侧防护, 挡泥板均为铝合金材质; 装配式结构, 方便维修保养; The ladder, tool box, valve box, side guard, and mud fenders are all made of aluminum alloy; the assembled structure is convenient for maintenance;





11. 此车型加装大容量备用油箱，可解决国外当地由于加油站稀少，增加车辆续航里程；The vehicle equipped with a large-capacity spare fuel tank, which can solve the problem of increasing the cruising range, in case of the scarcity of gas stations in foreign countries.





Shandong Shengrun Automobile Co., Ltd

Tongya road NO.1, Quanpu industrial area Liangshan County, Shandong Province, China





Production Process



Laser cutting welding



Expansion head



Splicing package



Tank forming



Finished product



Surface treatment



Paint spraying



Install tires



The whole trailer

Customers Visiting



SHENGRUN AUTO
Since 1982. Double safety Tanker